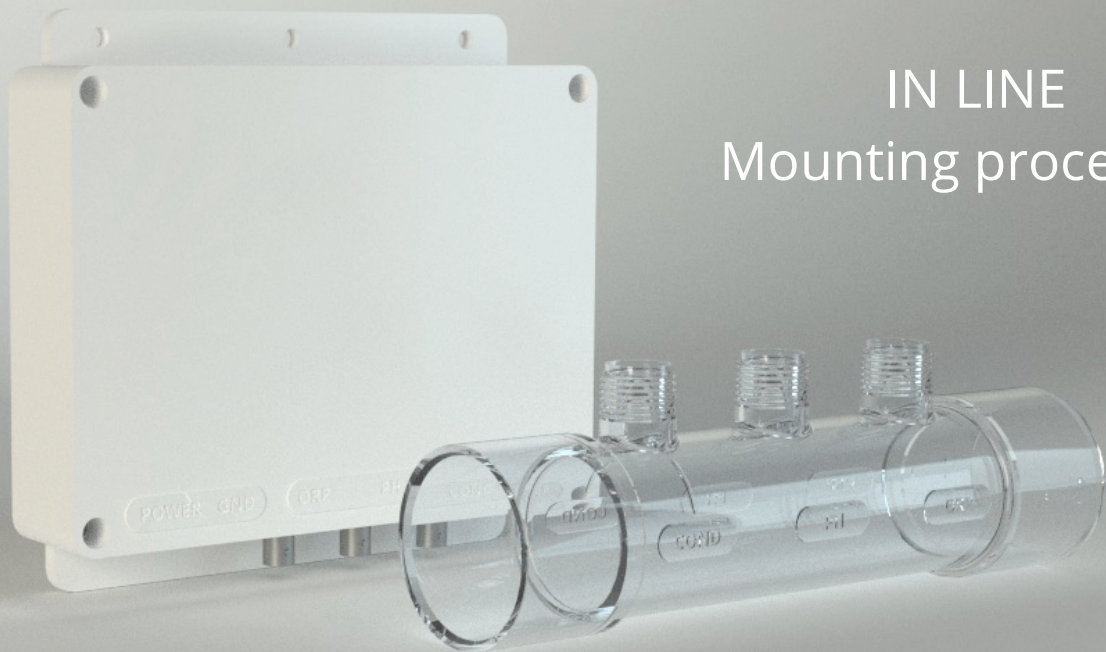


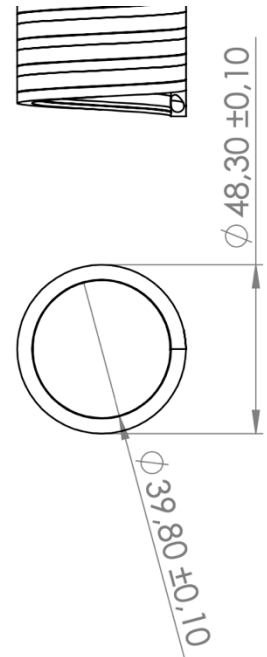


## IN LINE Mounting procedure



### Manifold

- Make sure the sensor caps are tightened to secure waterproofness.
- The manifold is to be glued on the piping system between the skimmer and the filtration pump, **maximum 2 feet away from the IN LINE control box**
- The manifold is to be glued on a piping system with an outside diameter of 48.3 mm (see drawing below)
- The sensors must be accessible for further maintenance (cleaning, calibration...)
- **It is recommended to place the manifold between 2 slice valves.**



### Control box

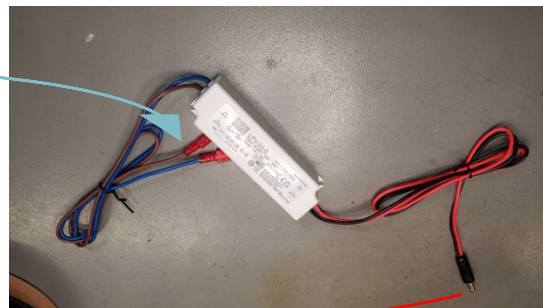
- The Control box is to be fixed on the Spa frame under the skirting, **maximum 2 feet away from the IN LINE manifold**
- The BNC connectors must be facing out (as on the picture below) to optimize Wi-Fi performance and to ease further operations on the sensors (replacement, cleaning)





### Power adapter

- Fasten lugs to be plugged inside the Spa pack according to the Spa pack manufacturer's guidance
- Jack connector to be plugged on the IN LINE control box (POWER)
- Power adapter must be fixed to the spa frame in such a way that the cables are not under tension.



### Sensors pack

1. **If the SPA IN LINE device is installed at the spa factory:**
  - The complete sensors pack must be fixed on the Spa frame.
  - Installation of sensors will be done at the final installation location by a professional
2. **If the SPA IN LINE device is installed on an installed spa:**
  - Follow the instructions on the **QuickStart guide** supplied with the sensors



Technical information:

Control box	IP54
Power adapter	IP67
Maximum flow	16m <sup>3</sup> /h
Minimum flow	4,5m <sup>3</sup> /h

NB:

- SPA IN LINE is not compatible with Active oxygen disinfection
- For accurate readings water must be circulating at least every hour

For any help or questions, contact us at [support@ondilo.com](mailto:support@ondilo.com)